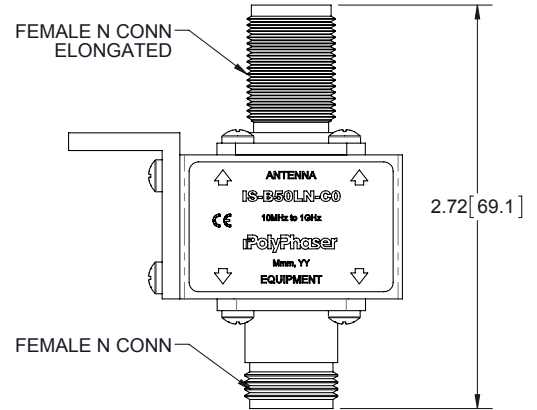
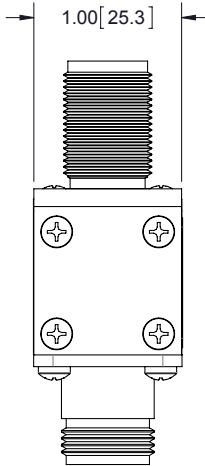
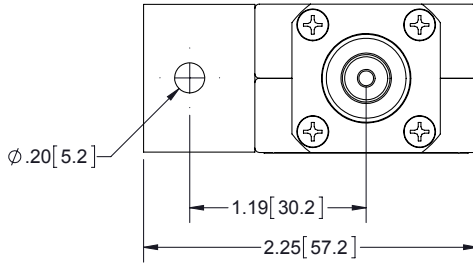


**HARDWARE KIT INCLUDES:**

QTY	DESCRIPTION
1	SCREW 10-32x.75 HEX MS 18-8 SS
1	NUT 10-32 HEX 18-8 SS
2	WASHER 10 INT 4-10 SS
1	NUT 5/8-24 303 HEX SS
1	WASHER 5/8 410 SS
1	O-RING 114 EPDM

REVISIONS				
REV.	DESCRIPTION	ECN	DATE	APPROVED
K	REFER TO ECN	13175	4/22/15	EJD



**MAXIMUM CHARACTERISTICS**

**APPLICATION:**  
FOR TWO WAY RADIO AND SCADA APPLICATIONS  
NON-WEATHERIZED, BULKHEAD MOUNT

**SURGE:**  
20kA IEC 61000-4-5 8/20μs WAVEFORM MULTIPLE

**TURN-ON:**  
600Vdc ±20%

**TURN-ON TIME:**  
2.5ns for 2kV/ns

**FREQUENCY RANGE:**  
10MHz to 1GHz

**VSWR:**  
≤ 1.1 to 1 OVER FREQUENCY RANGE

**INSERTION LOSS:**  
≤ 0.1dB OVER FREQUENCY RANGE

**MAX POWER:**  
1.5kW @ 10 to 50MHz  
375W @ 50 to 220MHz  
125W @ 220 to 700MHz  
50W @ 700 to 1000MHz

**THROUGHTPUT ENERGY:**  
≤3.5mJ @ 3kA 8/20μs WAVEFORM

**TEMPERATURE:**  
STORAGE: -55°C to +85°C  
OPERATING: -50°C to +50°C

**VIBRATION:**  
1G up to 100Hz

**CE COMPLIANT**

**RoHS COMPLIANT**

CUSTOMER APPROVAL: \_\_\_\_\_ DATE: \_\_\_\_\_

ALL DIMENSIONS SHOWN ARE FOR REFERENCE ONLY.

THESE COMMODITIES, TECHNOLOGY OR SOFTWARE WERE EXPORTED FROM THE UNITED STATES IN ACCORDANCE WITH THE EXPORT ADMINISTRATION REGULATIONS. DIVERSION CONTRARY TO U.S. LAW PROHIBITED.

© 2015 PolyPhaser. All rights reserved.

UNLESS OTHERWISE SPECIFIED LEADING DIMENSIONS ARE INCHES DIMENSIONS IN [ ] ARE MILLIMETERS	DRAWN	DS	DATE	2/3/93	SHEET 1 OF 1							
	ENG APPD	JLJ	DATE	2/3/93								
TOLERANCES: FRACTIONS=± 1/32 XX± .03 ANGLES=± 1° XXX± .010	PRODUCT MGR				SCALE 1:1							
NOTICE: THE INFORMATION AND DESIGN IN THIS DOCUMENT IS THE PROPERTY OF POLYPHASER CORPORATION. ALL RIGHTS RESERVED.	MARKETING APPD	NJ	2/3/93	TITLE BROADBAND 10MHz TO 1GHz N FEM BLKH								
	PROJECT NO.			CUSTOMER SPECIFICATION								
THIRD-ANGLE PROJECTION	DOCUMENT NAME	IS-B50LN-C0-C	SIZE	A	CAGE	30992	PROD CAT	RFP	PART NUMBER	IS-B50LN-C0	REV	K